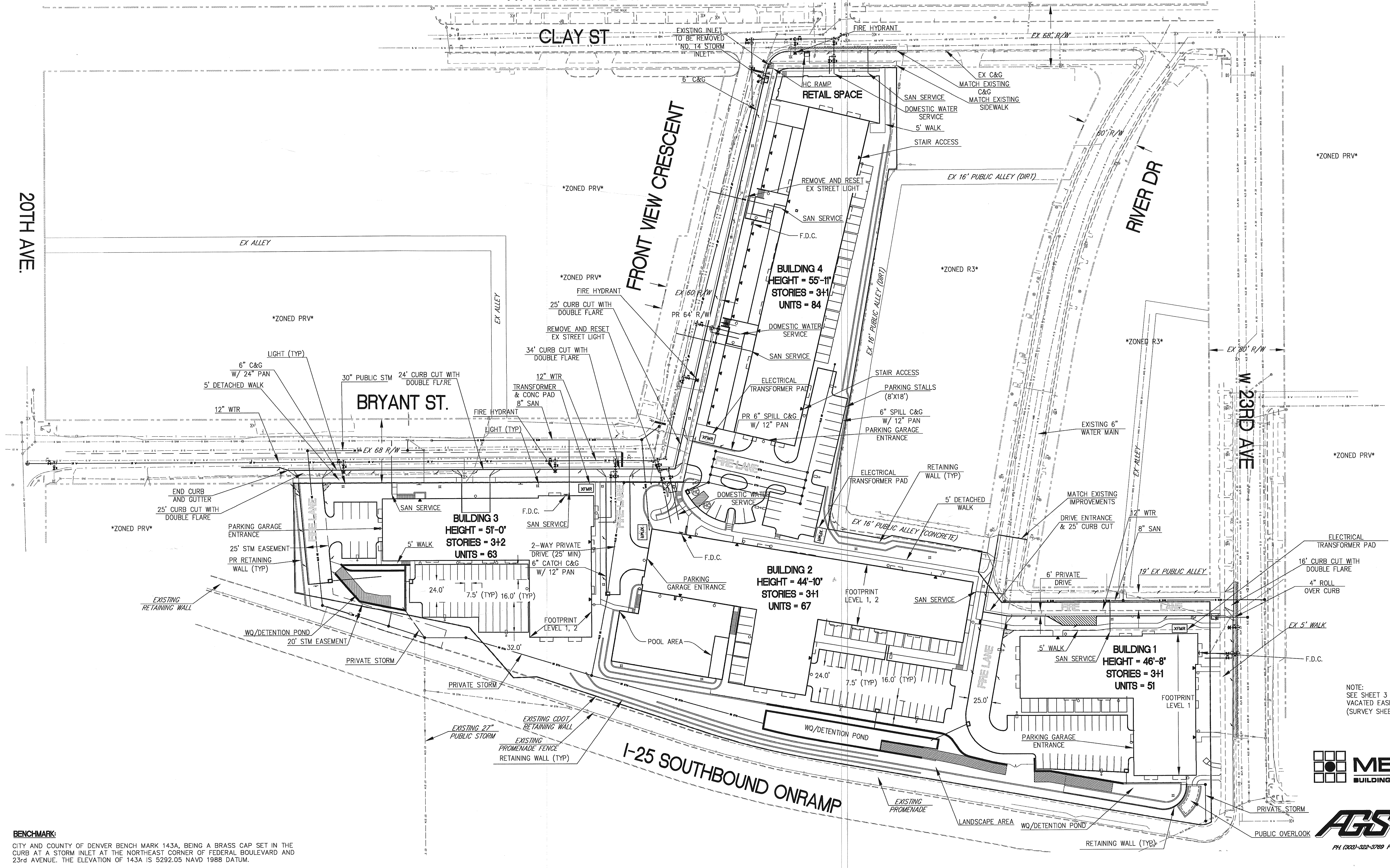
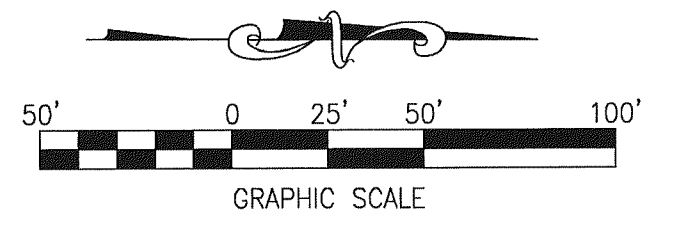


ELEMENT 47 (PREVIOUSLY CALLED PINNACLE STATION) A PLANNED UNIT DEVELOPMENT

A PORTION OF RIVER FRONT IN THE TOWN OF HIGHLANDS BEING A PART OF THE EAST HALF OF SECTION 32, TOWNSHIP 3 SOUTH, RANGE 68 WEST OF THE 6th PRINCIPAL MERIDIAN CITY & COUNTY OF DENVER, STATE OF COLORADO
AT THE INTERSECTION OF BRYANT ST. AND FRONT VIEW CRESCENT



NOTE:
SEE SHEET 3 FOR
VACATED EASEMENTS
(SURVEY SHEET)



BENCHMARK:
CITY AND COUNTY OF DENVER BENCH MARK 143A, BEING A BRASS CAP SET IN THE CURB AT A STORM INLET AT THE NORTHEAST CORNER OF FEDERAL BOULEVARD AND 23rd AVENUE. THE ELEVATION OF 143A IS 5292.05 NAVD 1988 DATUM.

I:\ACT\19010231_Design\CD\DEVELOPMENT\6232-DVP-SITE.dwg, SITE.PK, 6/12/2009 7:48:28 AM, hails, Adobe PDF, 1:1