



DENVER
THE MILE HIGH CITY

Department of Public Works
Permit Operations and Right of Way
Enforcement
201 W. Colfax Avenue, Dept. 507
Denver, CO 80202
P: 720-865-2782
F: 720-865-3280
www.denvergo.org/pwprs

NEIGHBORHOOD ORGANIZATION NOTIFICATION LETTER

02/18/2009

Jefferson Park United Neighbors
Barbara Baker
PO Box 46212
Denver, CO 80201-6212

Pursuant to the Neighborhood Organization Registration Ordinance (Section 41-19 Revised Municipal Code), you are hereby notified of the following street/alley vacation request:

Project Number: 2007-0535-06, 2007-0535-07 and 2007-0535-08

Location of Proposed Vacation: (Requesting to vacate the Alcott Street between W 27th and Speer, the north-south alley between Alcott St and Bryant St, and W 28th St between Bryant St and N Speer. (Also see attached map)

Applicant Contact Information: Katherine Iverson

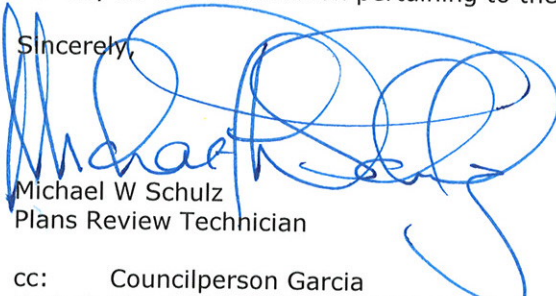
Reason for Vacation: Development

After some initial procedural requirements are met, the applicant requesting the vacation is required to post signs for 20 days to inform the public of the proposed vacation. If written protests are received, the issue will be reviewed for technical merit, the Manager of Public Works, if needed, will then schedule a meeting. You will be notified if such a meeting is scheduled for the above vacation request.

Said protests and approvals are required to be delivered in writing on or before 03/11/2009

For any further information pertaining to the vacation please do not hesitate to call me at (720) 865-3115

Sincerely,



Michael W Schulz
Plans Review Technician

cc: Councilperson Garcia
Project File: 2007-0535-06, 2007-0535-07 and 2007-0535-08

311

for City Services
Denver gets it done!

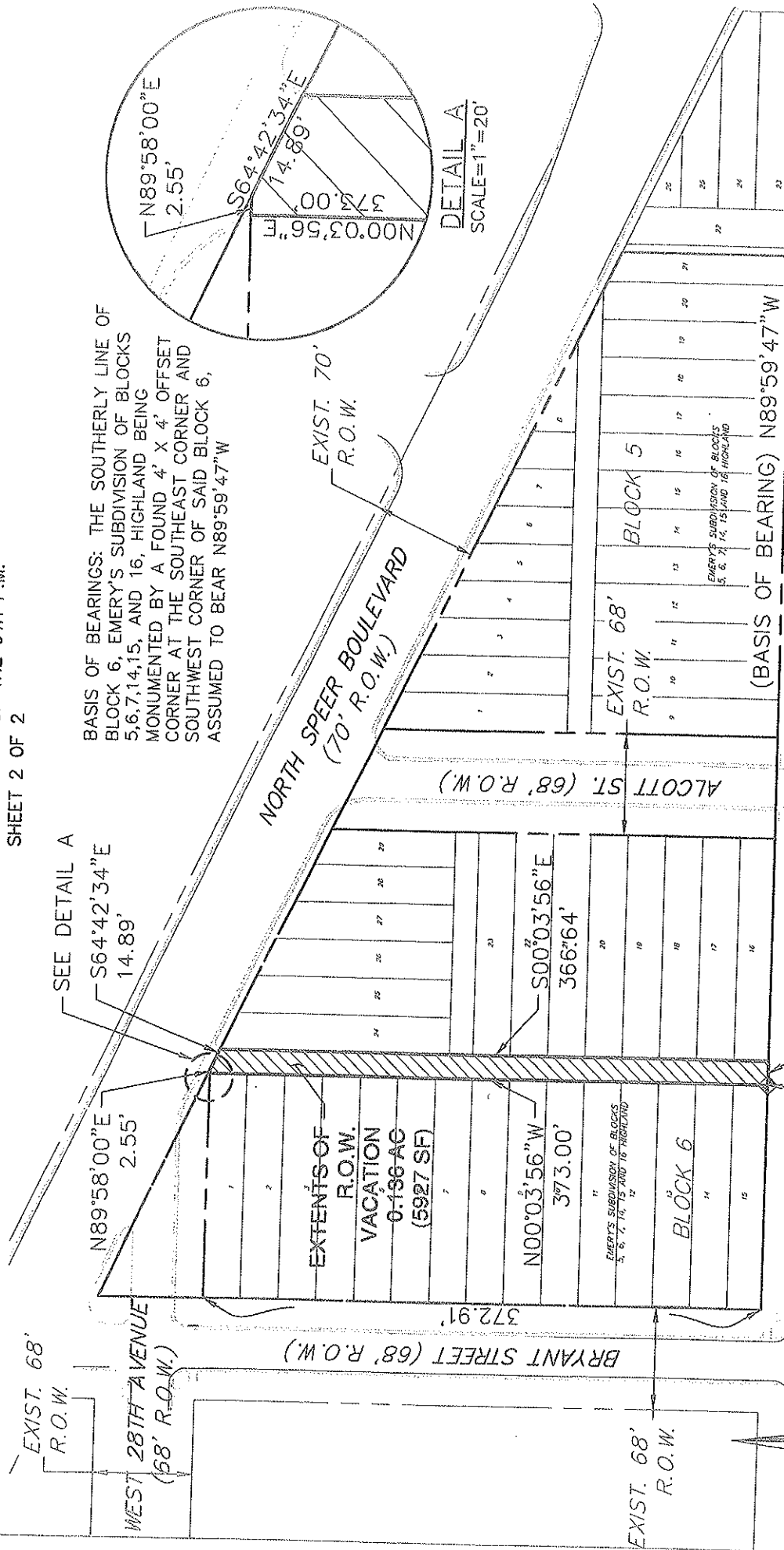
K:\PWDESIGN\arear\ROW\PROJECTS\2007\2007-0535-08\Letter to Neighborhood Orgs.doc

2785 SPEER

ALLEY R.O.W. VACATION

SE 1/4 SEC.29 T.3 S, R.68 W. OF THE 6TH P.M.
SHEET 2 OF 2

R.O.W PROJECT NO. 2007-0535
DES PARCEL NO. 2007-0535-002



SEE DETAIL A

S64°42'34"E
14.89'

N89°58'00"E
2.55'

EXTENTS OF
R.O.W.
VACATION
0.196-AC
(5927 SF)

S00°03'56"E
366'64'

N00°03'56"W
373.00'

EMERY'S SUBDIVISION OF BLOCKS
5, 6, 7, 14, 15 AND 16 HIGHLAND

BLOCK 6

EXIST. 68'
R.O.W.

POINT OF BEGINNING
SOUTHEASTERLY CORNER
OF LOT 15 OF BLOCK 6

WEST 27TH AVENUE (68' R.O.W.)
N89°59'47"W
16.00'

ALCOTT ST. (68' R.O.W.)

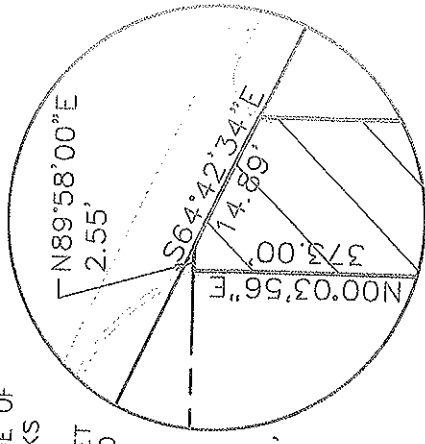
EXIST. 68'
R.O.W.

(BASIS OF BEARING) N89°59'47"W

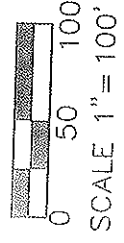
NORTH SPEER BOULEVARD
(70' R.O.W.)

EXIST. 70'
R.O.W.

BASIS OF BEARINGS: THE SOUTHERLY LINE OF
BLOCK 6, EMERY'S SUBDIVISION OF BLOCKS
5,6,7,14,15, AND 16, HIGHLAND BEING
MONUMENTED BY A FOUND 4' X 4' OFFSET
CORNER AT THE SOUTHEAST CORNER AND
SOUTHWEST CORNER OF SAID BLOCK 6,
ASSUMED TO BEAR N89°59'47"W



DETAIL A
SCALE=1"=20'



NOTE: THIS EXHIBIT DOES NOT
REPRESENT A MONUMENTED SURVEY.
IT IS INTENDED ONLY TO DEPICT THE
ATTACHED DESCRIPTION.

REV. JANUARY 7, 2009
OCTOBER 23, 2008



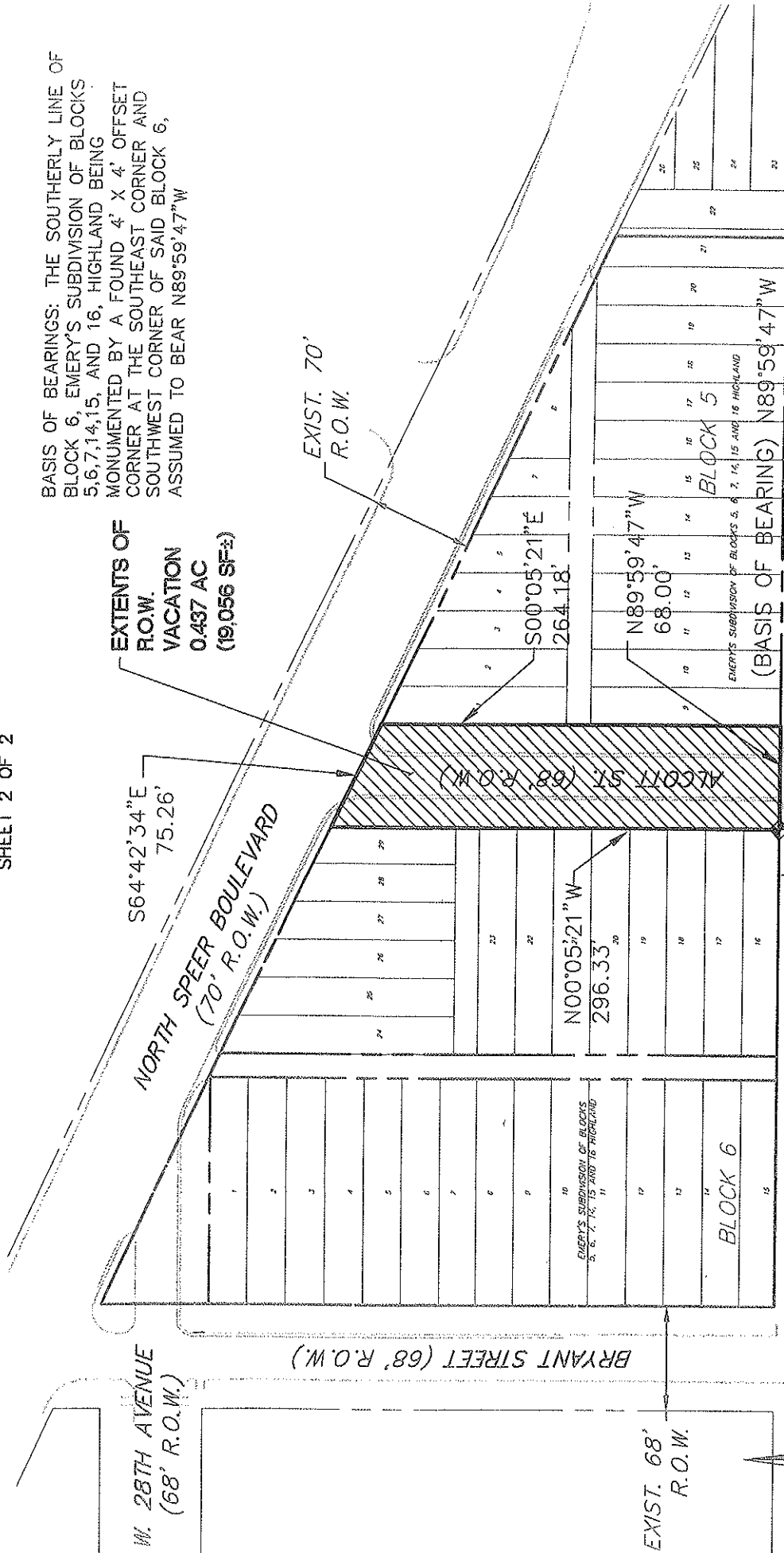
MARTIN / MARTIN
CONSULTING ENGINEERS
12499 WEST COLFAX AVE.
P.O. BOX 151500
LAKEWOOD, CO 80215
303.431.6100
FAX 303.431.4028

2785 SPEER
 ALCOTT STREET R.O.W. VACATION
 SE ¼ SEC.29 T.3 S, R.68 W. OF THE 6TH P.M.
 SHEET 2 OF 2

R.O.W PROJECT NO. 2007-0535
 DES PARCEL NO. 2007-0535-003

BASIS OF BEARINGS: THE SOUTHERLY LINE OF
 BLOCK 6, EMERY'S SUBDIVISION OF BLOCKS
 5,6,7,14,15, AND 16, HIGHLAND BEING
 MONUMENTED BY A FOUND 4' X 4' OFFSET
 CORNER AT THE SOUTHEAST CORNER AND
 SOUTHWEST CORNER OF SAID BLOCK 6,
 ASSUMED TO BEAR N89°59'47"W

EXTENTS OF
 R.O.W.
 VACATION
 0.437 AC
 (19,056 SF±)



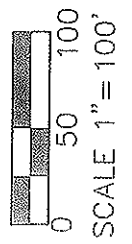
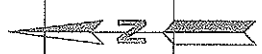
REV JANUARY 5, 2009
 OCTOBER 23, 2008



MARTIN / MARTIN
 CONSULTING ENGINEERS
 12499 WEST COLFAX AVE.
 P.O. BOX 151500
 LAKEWOOD, CO 80215
 303.431.6100
 FAX 303.431.4028

POINT OF BEGINNING
 SOUTHEASTERLY CORNER
 OF LOT 16 OF BLOCK 6

NOTE: THIS EXHIBIT DOES NOT
 REPRESENT A MONUMENTED SURVEY.
 IT IS INTENDED ONLY TO DEPICT THE
 ATTACHED DESCRIPTION.

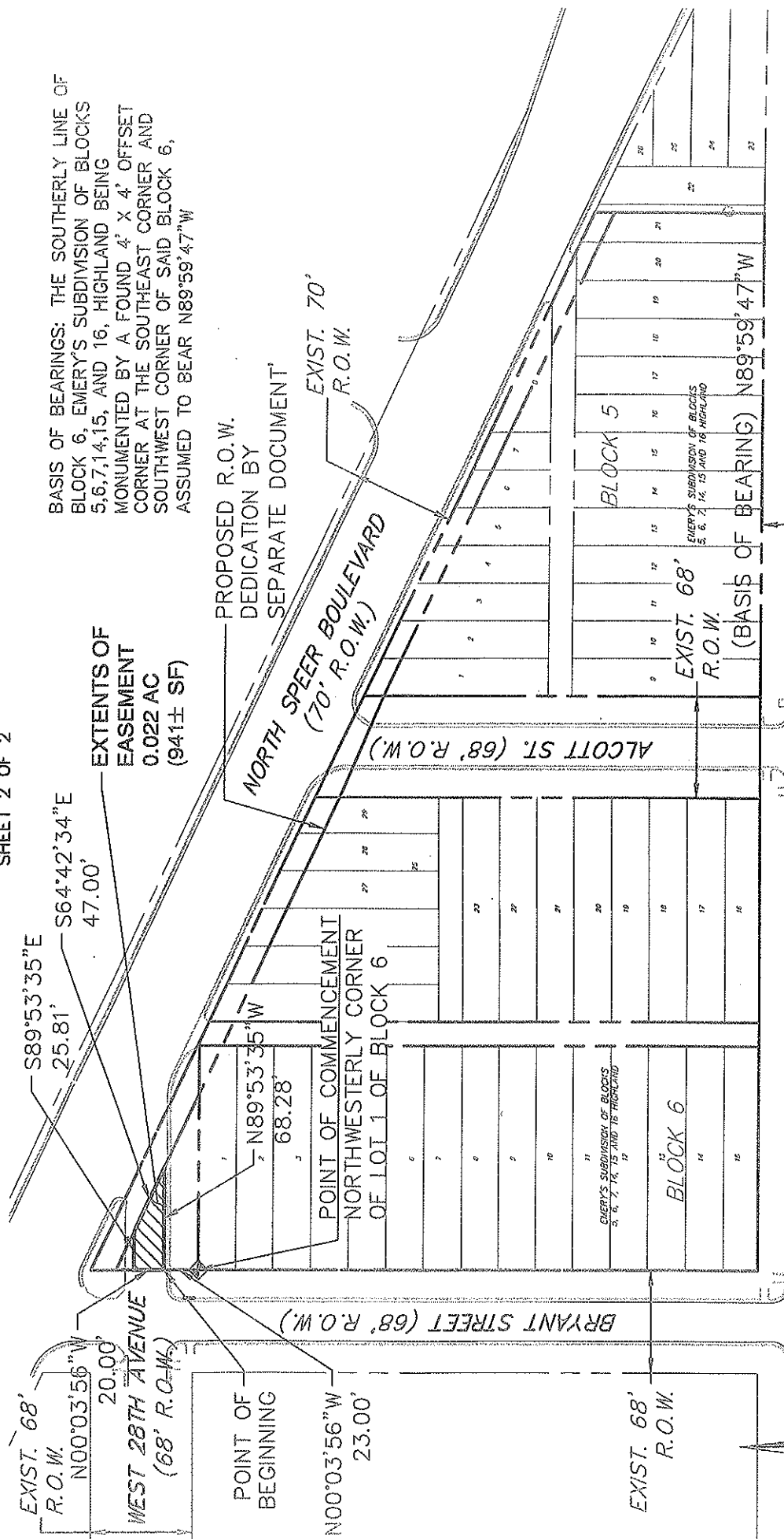


MSD

R.O.W PROJECT NO. 2007-0535
 DES PARCEL NO. 2007-0535-004

2785 SPEER
 UTILITY EASEMENT
 SE ¼ SEC.29 T.3 S, R.68 W. OF THE 6TH P.M.
 SHEET 2 OF 2

BASIS OF BEARINGS: THE SOUTHERLY LINE OF
 BLOCK 6, EMERY'S SUBDIVISION OF BLOCKS
 5,6,7,14,15, AND 16, HIGHLAND BEING
 MONUMENTED BY A FOUND 4' X 4' OFFSET
 CORNER AT THE SOUTHEAST CORNER AND
 SOUTHWEST CORNER OF SAID BLOCK 6,
 ASSUMED TO BEAR N89°59'47"W



REV. JANUARY 7, 2009
 SEPTEMBER 24, 2008

MARTIN / MARTIN
 CONSULTING ENGINEERS
 12499 WEST DOLFAK AVE.
 P.O. BOX 151500
 LAKEWOOD, CO 80215
 303.431.6100
 FAX 303.431.4025

NOTE: THIS EXHIBIT DOES NOT
 REPRESENT A MONUMENTED SURVEY.
 IT IS INTENDED ONLY TO DEPICT THE
 ATTACHED DESCRIPTION.

MM