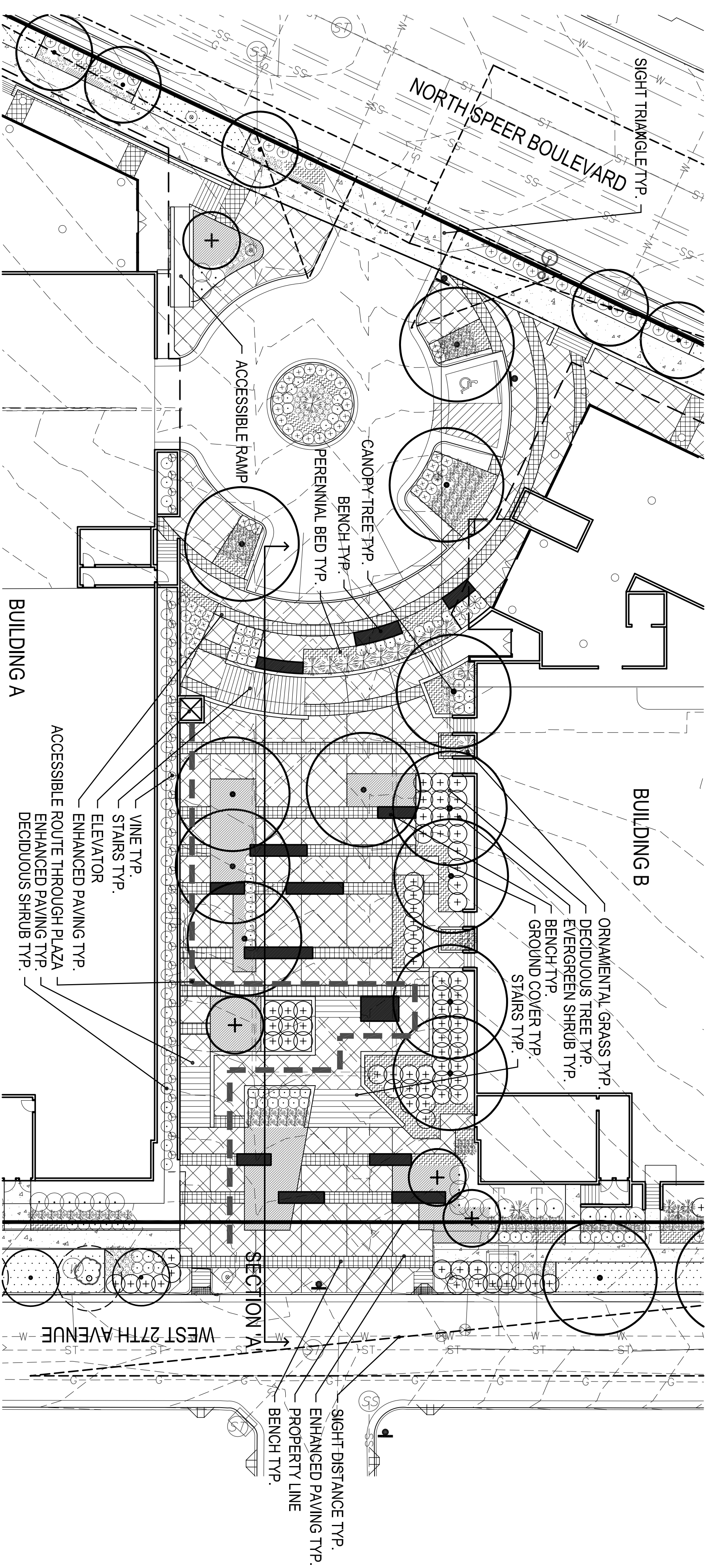


# 2785 SPEER

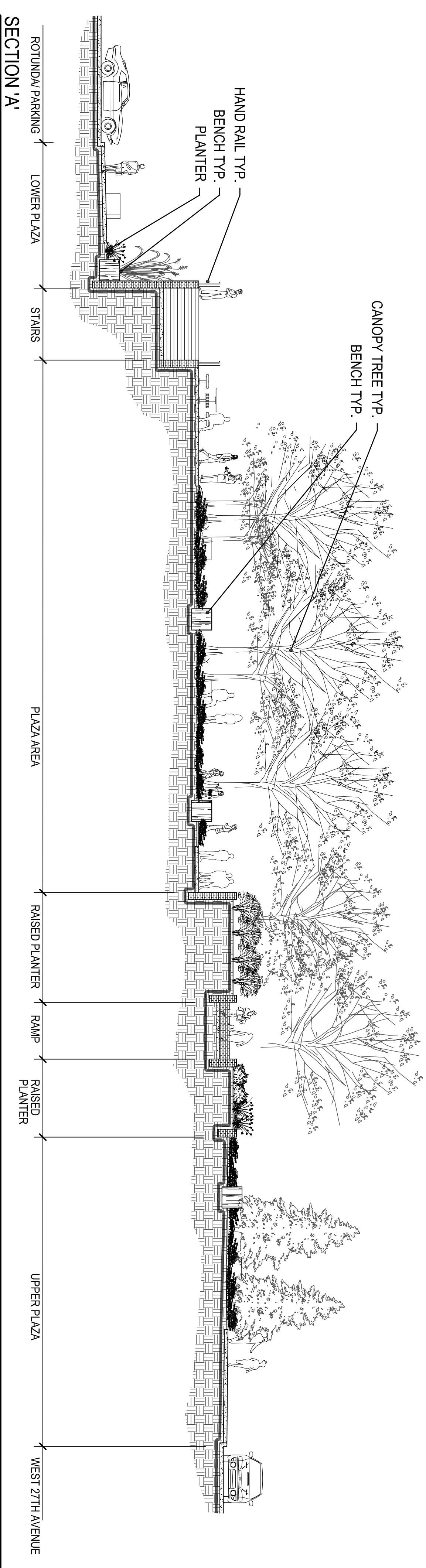
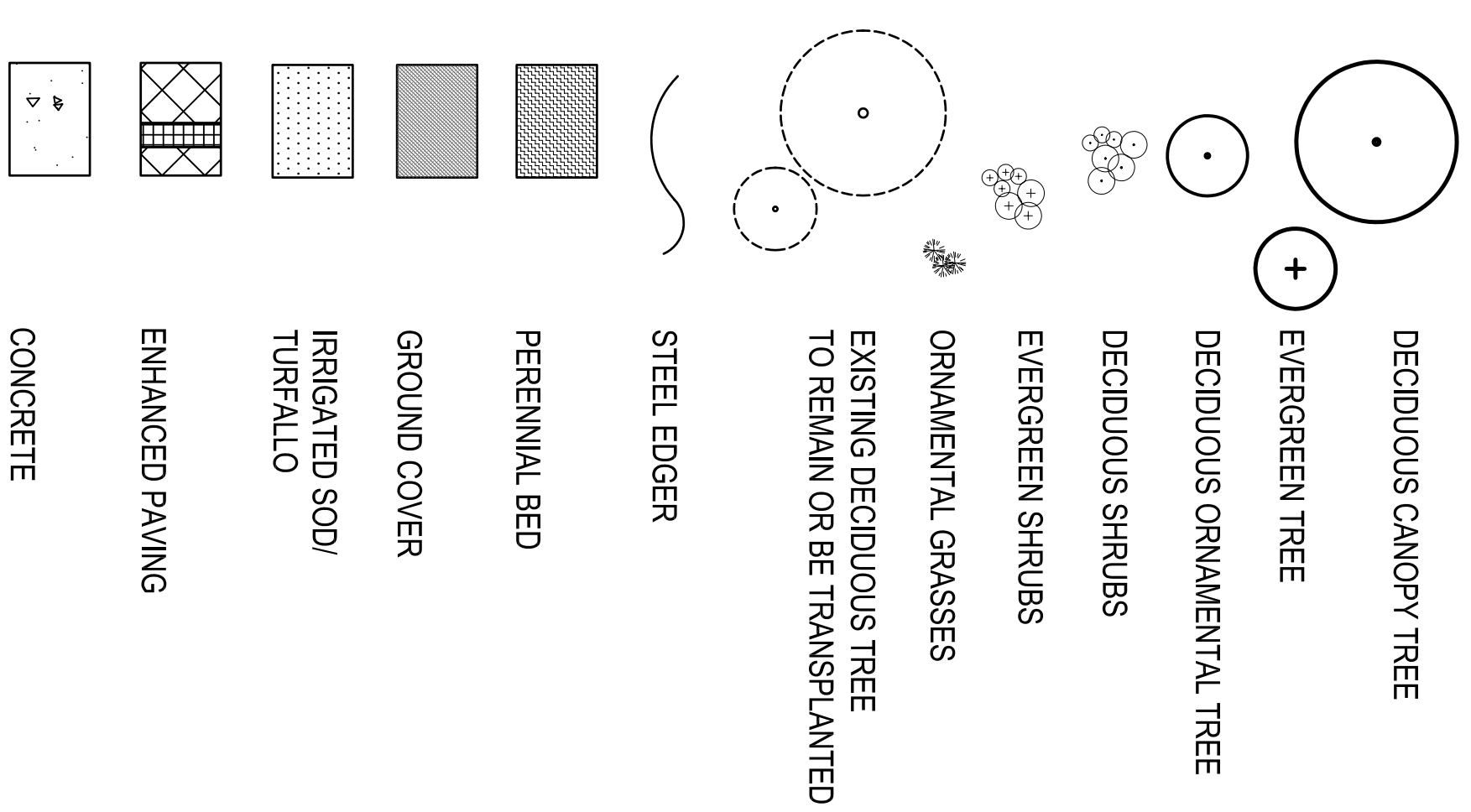
A MIXED USE DEVELOPMENT

A PART OF THE SOUTHEAST QUARTER OF SECTION 29, TOWNSHIP 3 SOUTH, RANGE 88 WEST OF THE 6TH PRINCIPAL MERIDIAN, CITY AND COUNTY OF DENVER, STATE OF COLORADO

LOCATED AT THE INTERSECTION OF NORTH SPEER BOULEVARD AND BRYANT STREET



## LANDSCAPE LEGEND



**MAINTENANCE CERTIFICATION**

1. (WE) THE UNDERSIGNED SHALL COMPLETE AND MAINTAIN THE LANDSCAPE IMPROVEMENTS SHOWN ON THIS PLAN AND SHALL COMPLY WITH CHAPTER 59, ARTICLE VI, SECTION 59-885 (11) OF THE REVISED MUNICIPAL CODE OF THE CITY AND COUNTY OF DENVER AND ASSOCIATED RULES AND REGULATIONS.

SIGNATURE \_\_\_\_\_ DATE \_\_\_\_\_

1101 Bannock Street  
Denver, Colorado 80204  
P. 303.892.1188  
F. 303.892.1185

**NORRIS DESIGN**  
Planning | Landscape Architecture

LANDSCAPE DETAILS SHEET 11 OF 19  
FEBRUARY 17, 2008  
DECEMBER 18, 2008  
OCTOBER 16, 2008

2785 SPEER